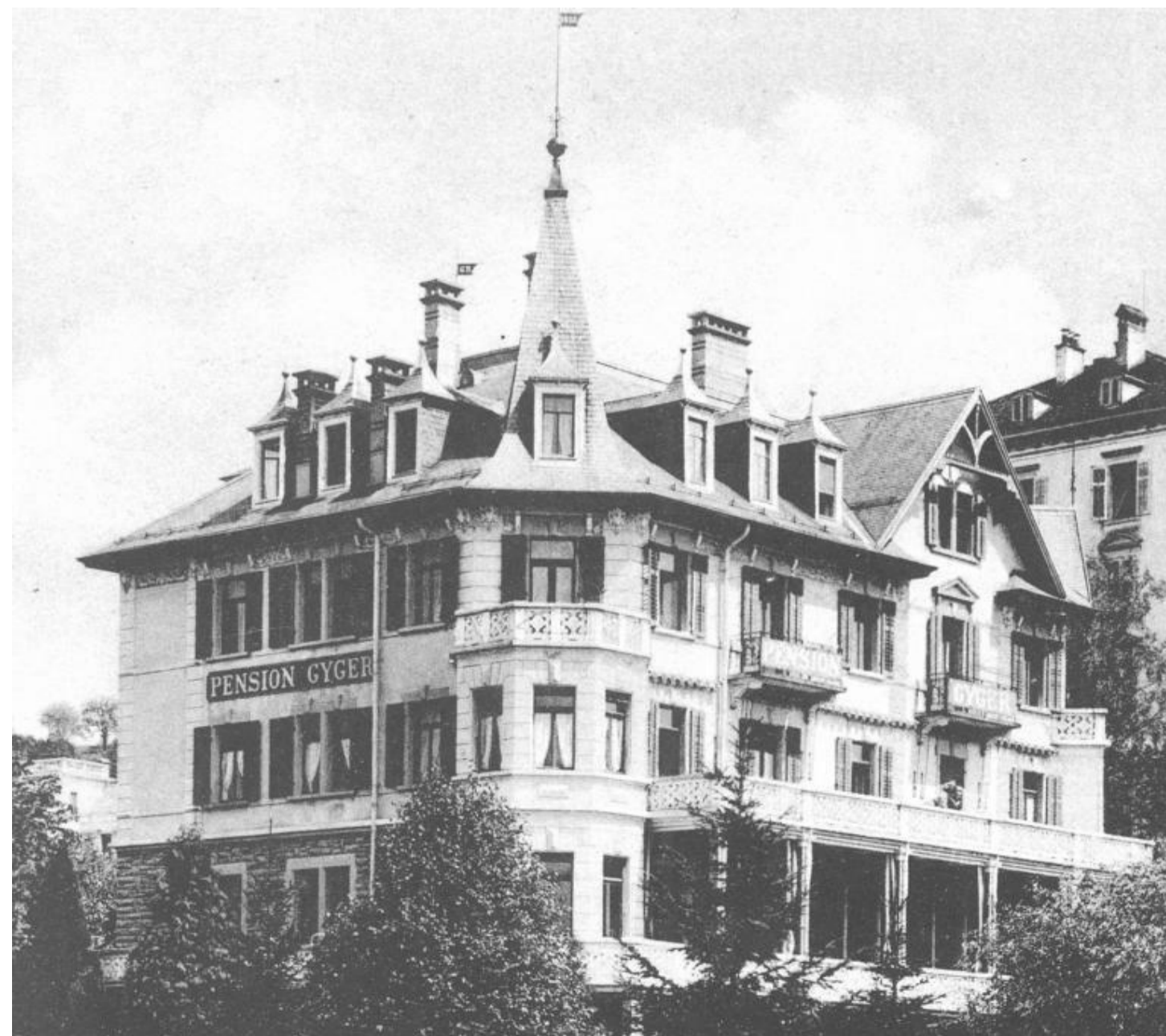
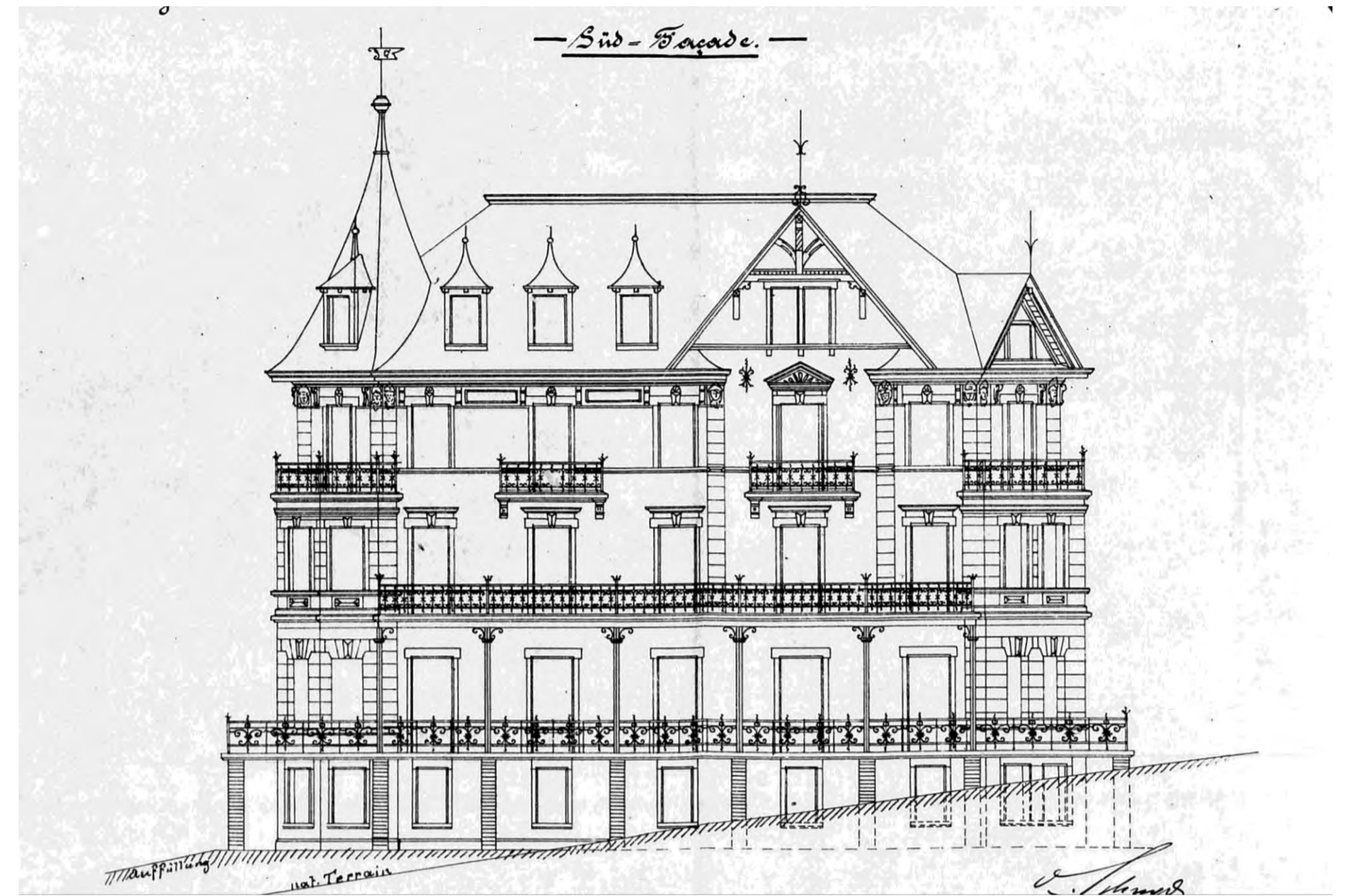
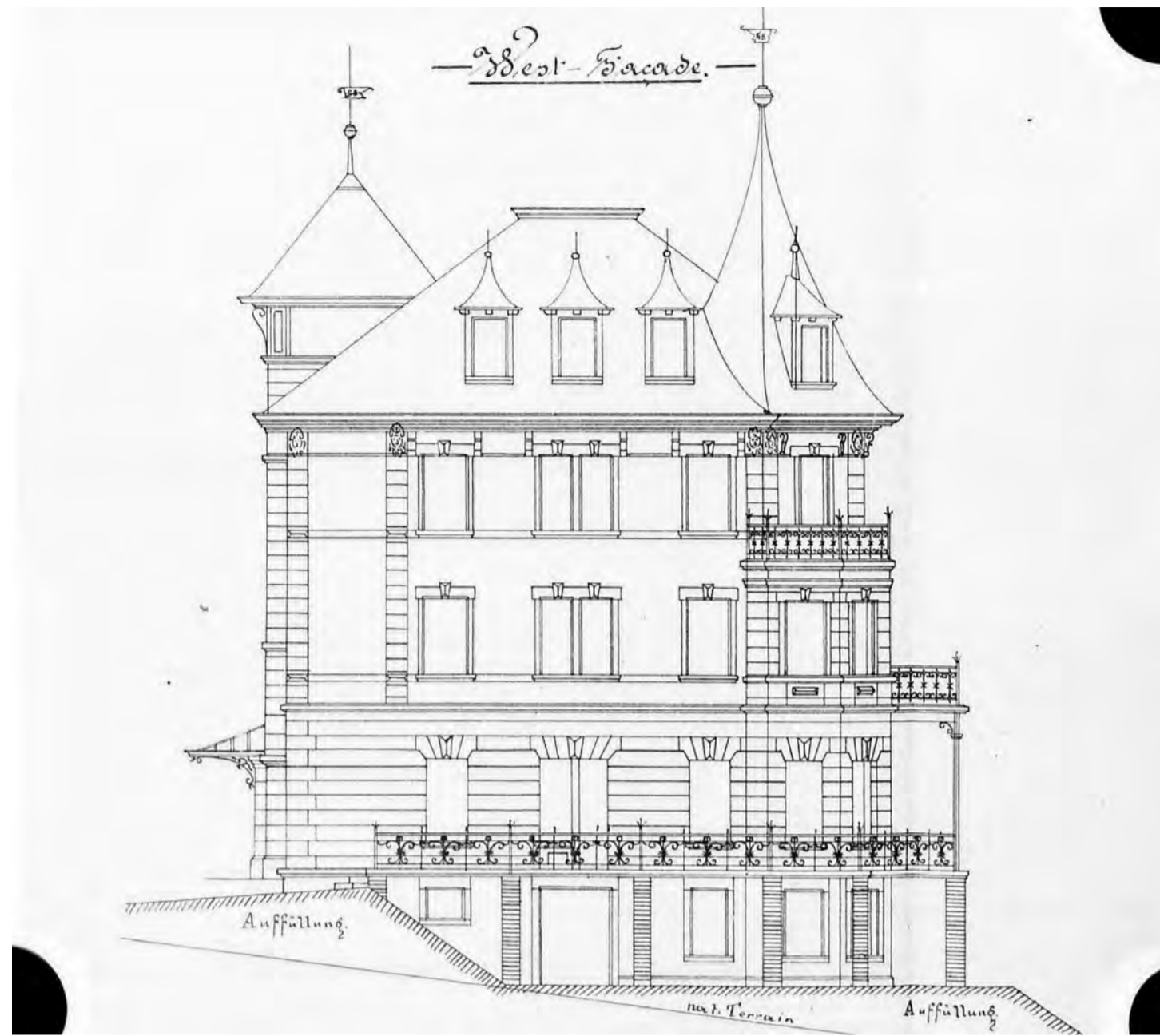


Stand 1893



Sanierung 1968 / Stand Heute



# Stand Fassaden Überarbeitung



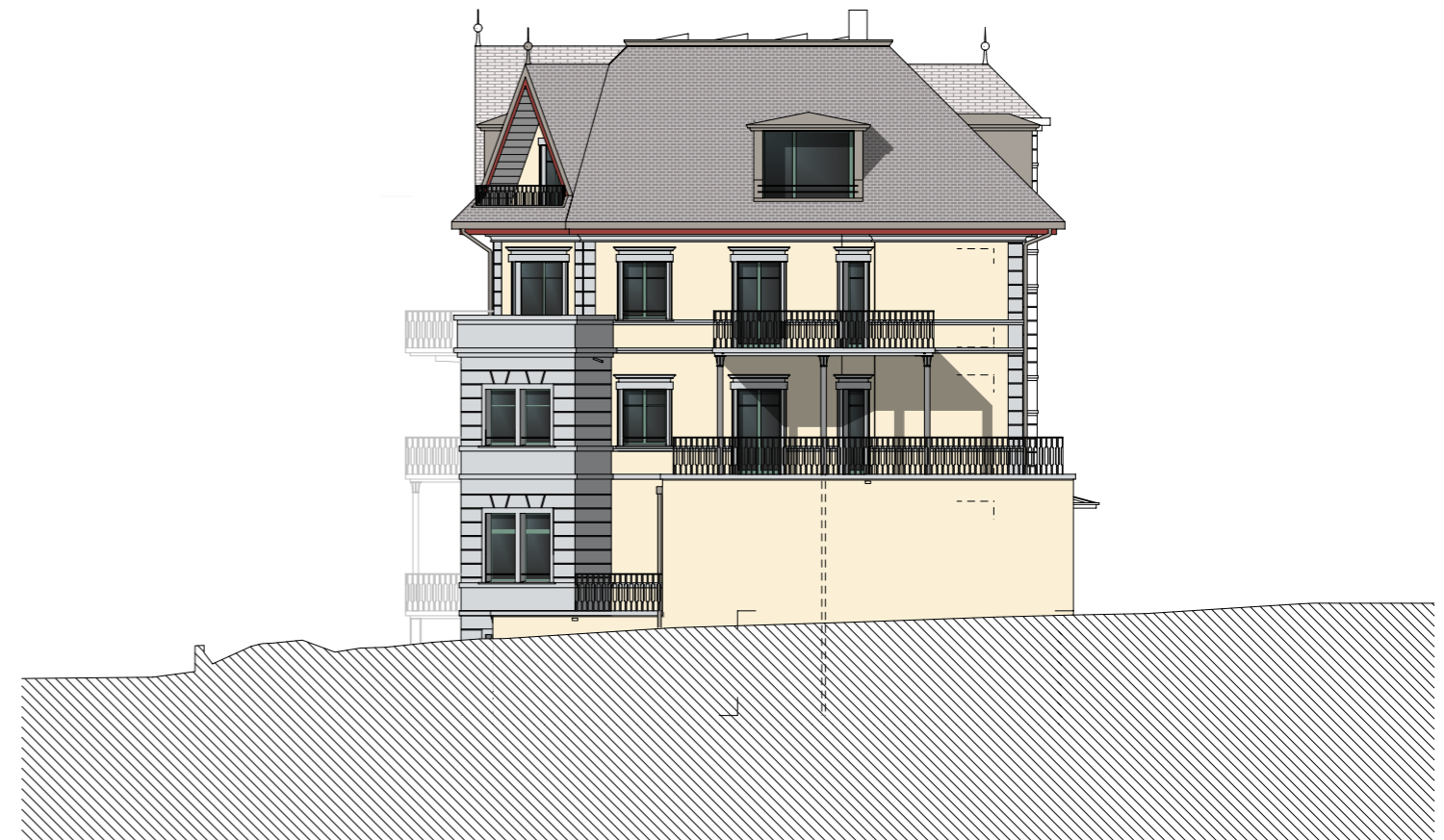
Südfassade



Westfassade



Nordfassade



Ostfassade

# Nordfassade



# Ostfassade



# Südfassade

+505.00 max. Firsthöhe

(Privatrechtlich)  
Dienstbarkeit Villenquartier  
max. Firstkante 505.00 m.ü.M

(Privatrechtlich)  
Dienstbarkeit Villenquartier:  
die Villa darf ausser dem Erdgeschoss  
maximal zwei Stockwerke enthalten

7.01<sup>5</sup>  
relevante Dachlänge 5/5 (BZR Art. 29.6)

2.36 1.50 3.15<sup>5</sup>

Dacheinbau ≤ 2/5 (2.80)

7.01<sup>5</sup>  
relevante Dachlänge 5/5 (BZR Art. 29.6)

3.15<sup>5</sup> 1.50 2.36

Dacheinbau ≤ 2/5 (2.80)

2.71

5.00  
BZR Art. 29.3

OK FB DG

1.20  
BZR Art. 29.2

16.00

Dienstbarkeit Villenquartier max Gebäudehöhe 16m ab EG (privatrechtlich)

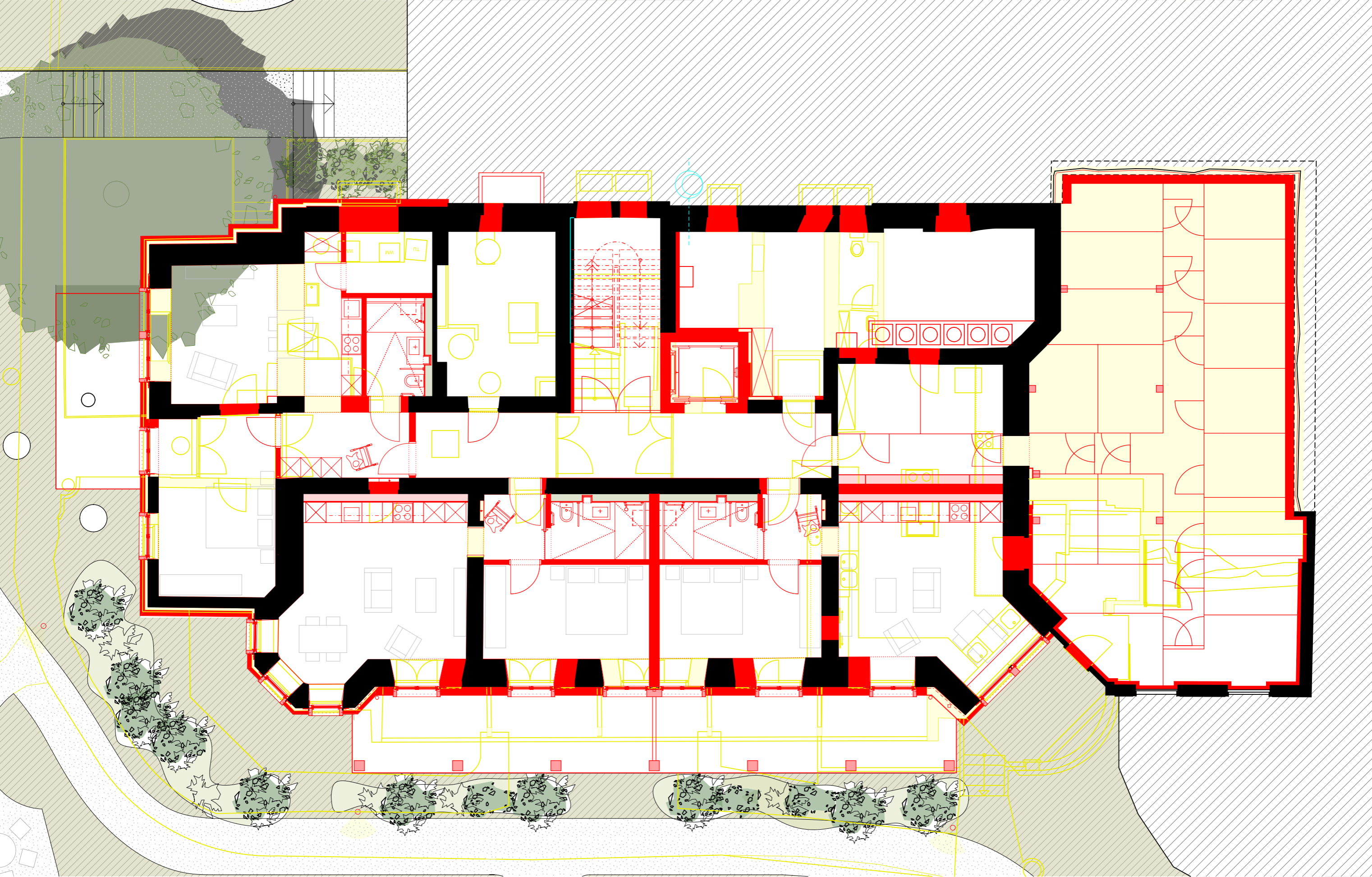
2.89<sup>5</sup>



# Westfassade

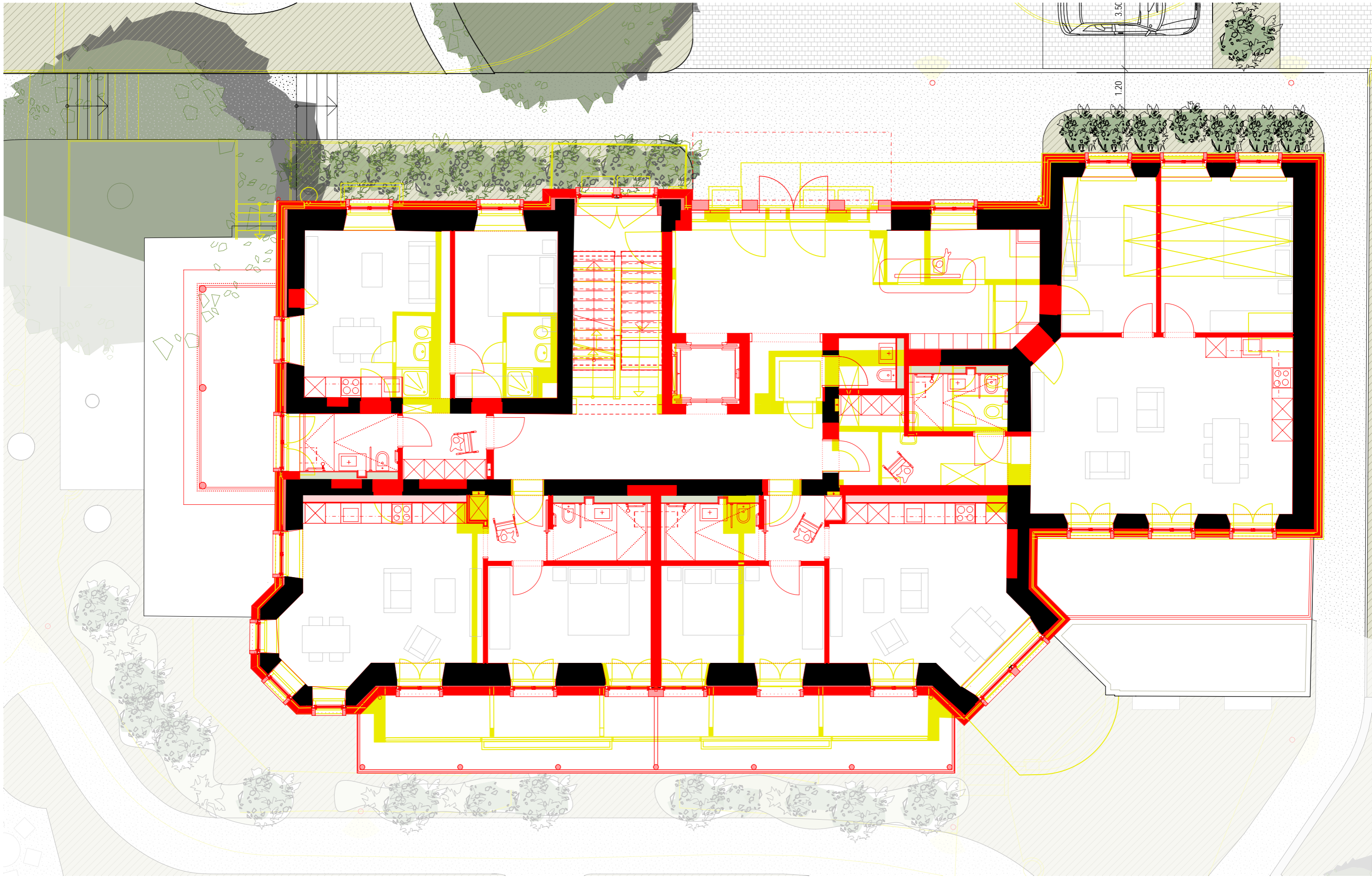


Grundriss Gartengeschoß

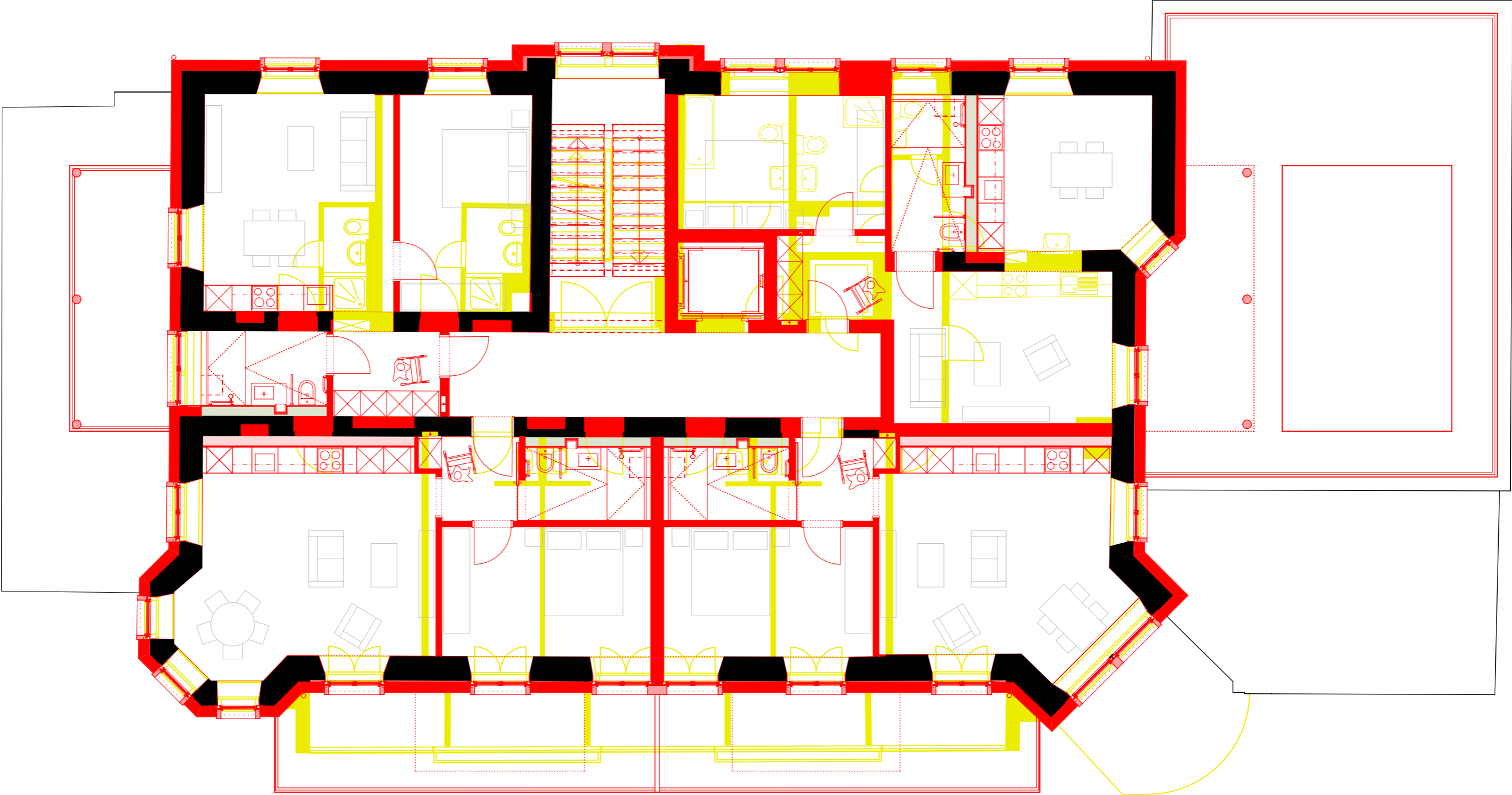




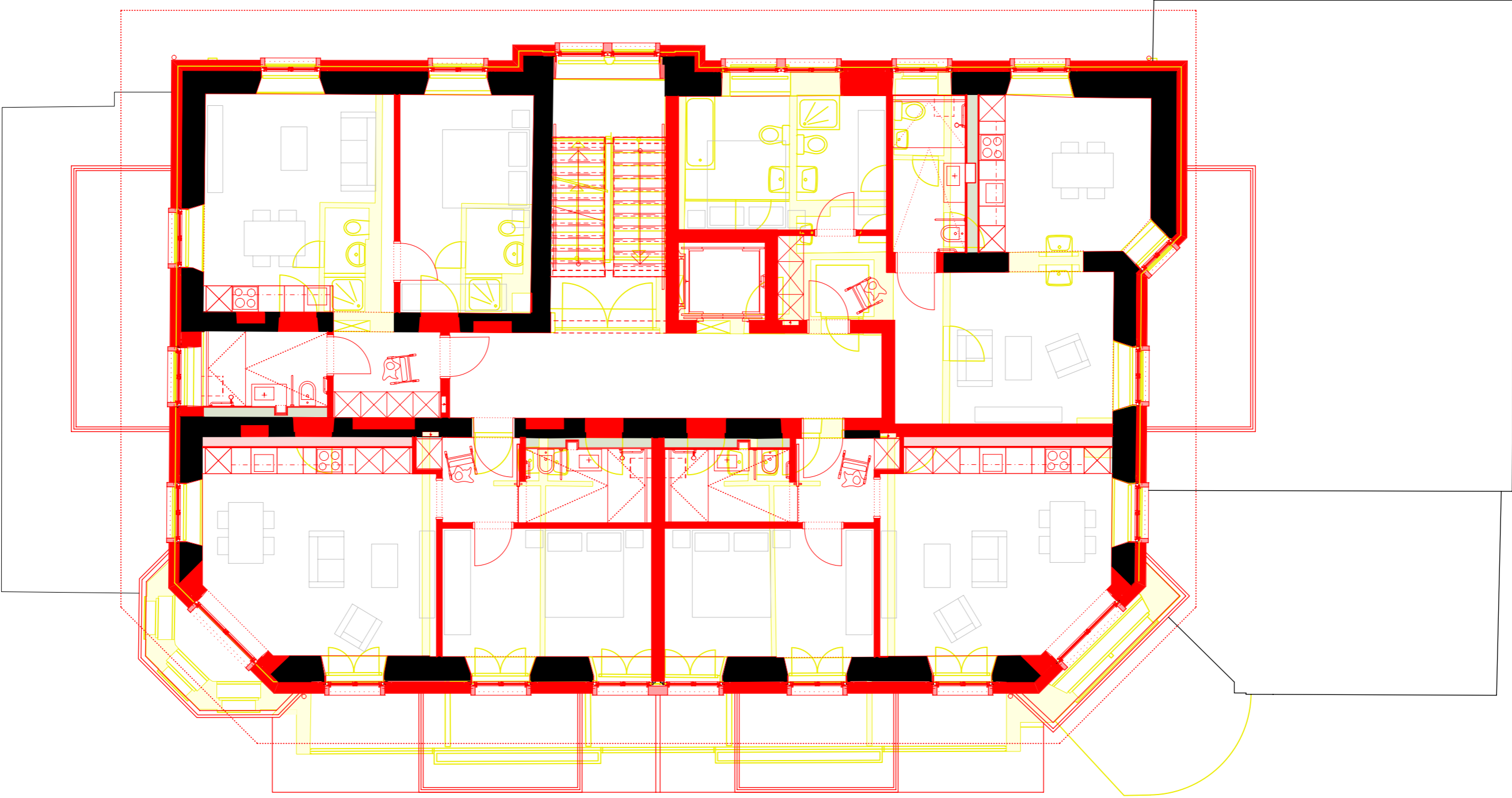
Grundriss Erdgeschoss



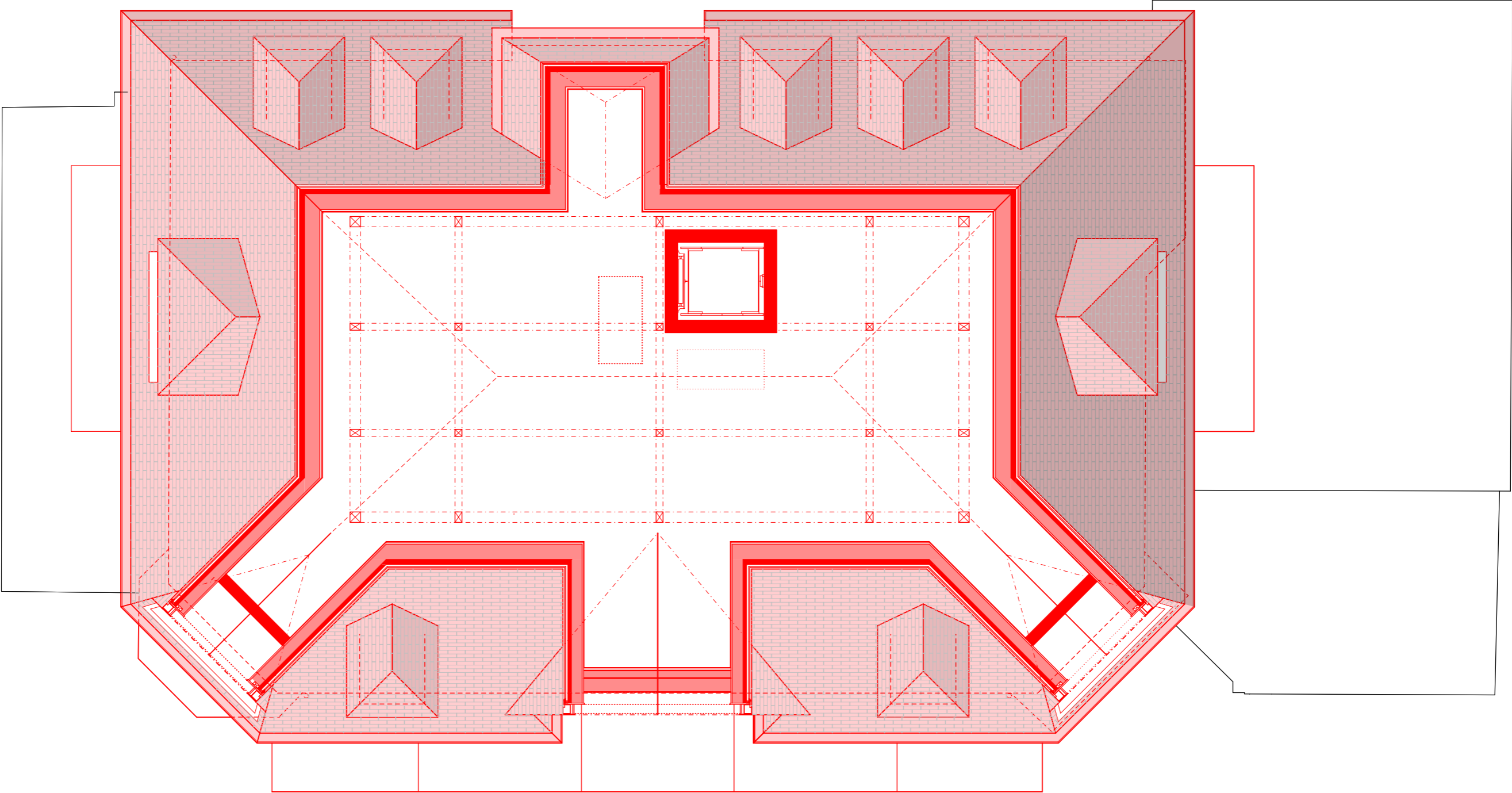
Grundriss 1.Obergeschoss



Grundriss 2. Obergeschoss



Grundriss Estrich





# Grundriss Dachaufsicht

